

Lake Erie Industrial Park Wastewater Treatment System  
Environmental Study Report Addendum  
Municipal Class Environmental Assessment

**Public Consultation**

November 23, 2021

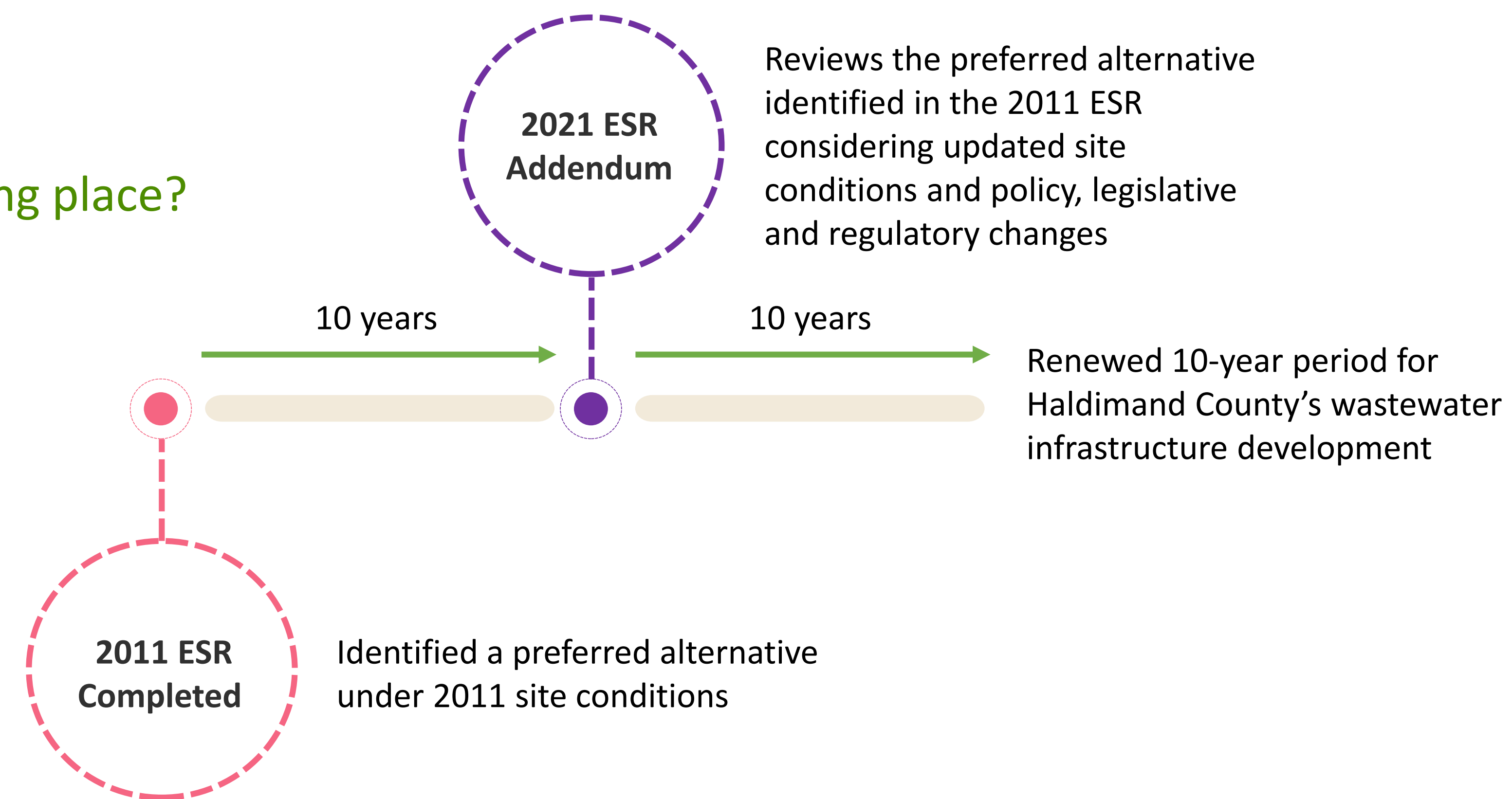


## Overview

### Why is the LEIP Wastewater Treatment System ESR Addendum Project taking place?

In 2011, Haldimand County, completed the Lake Erie Industrial Park (LEIP) Wastewater Treatment System Municipal Class Environmental Assessment (EA) Environmental Study Report (ESR). The 2011 ESR identifies a recommended plan for wastewater treatment and servicing capacity for the LEIP, the Stelco lagoons, and the surrounding communities of Townsend and Jarvis. The purpose of preparing an Addendum to the 2011 ESR is to:

1. Extend the timeframe of the original Class EA by 10 years
2. Update technical studies and confirm conditions have not changed significantly from the conditions reported in the 2011 ESR
3. Review the findings of the ESR in the broader context of the Highway 6 Corridor Water and Wastewater Servicing Strategy



## Public Consultation

The purpose of this public consultation is to:

1. Review the context of the previous 2011 ESR
2. Outline our approach to the ESR Addendum process
3. Identify further points for meaningful engagement and input

We also invite you to provide comments and ask questions as part of this Addendum process.

### What is a Wastewater Treatment Plant?

The wastewater collection system, consisting of sewers and pumping systems, collects and conveys sewage to a wastewater treatment plant. The plant treats the wastewater by using mechanical, chemical and biological processes. The 'treated' wastewater is then discharged to a nearby water body.

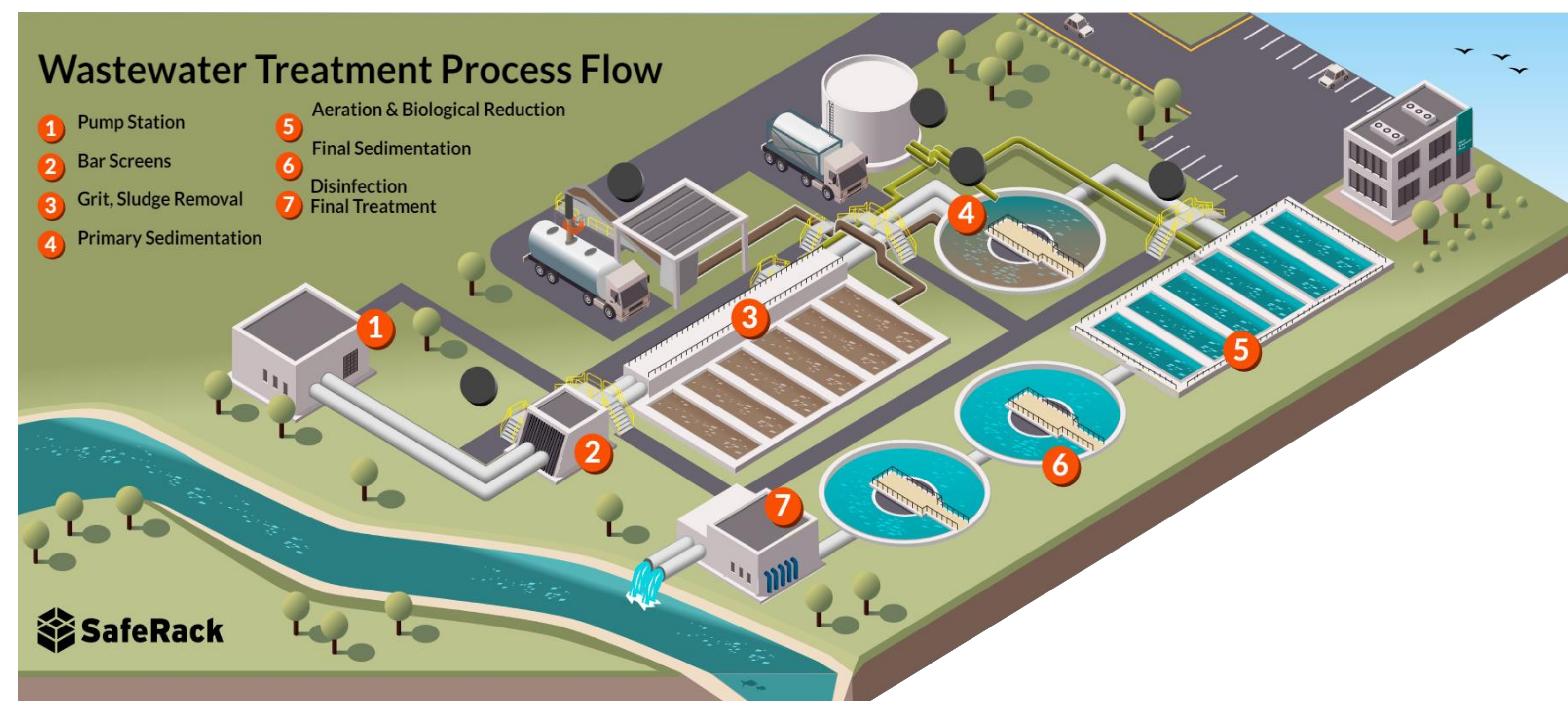
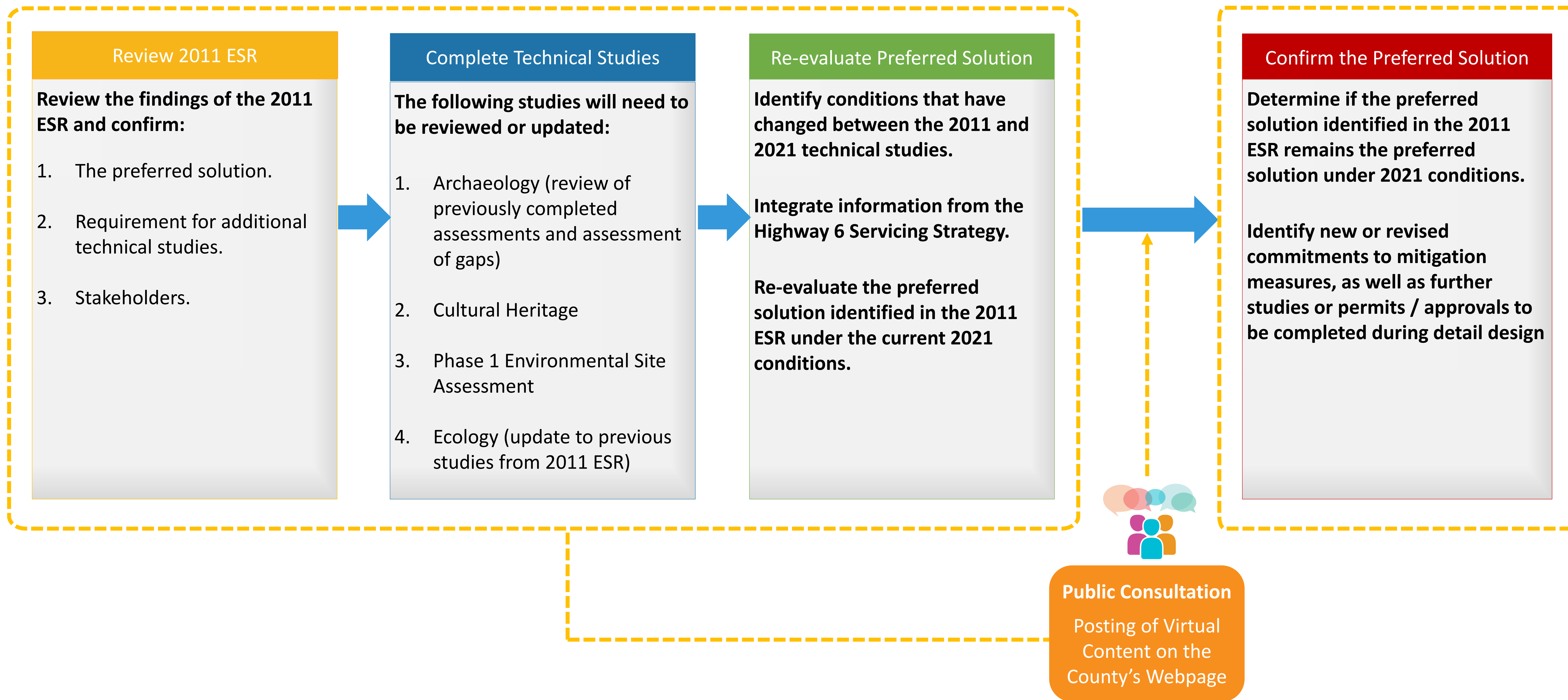


Image Source: <https://www.saferack.com/wastewater-treatment-plant/>



### ESR Addendum Process



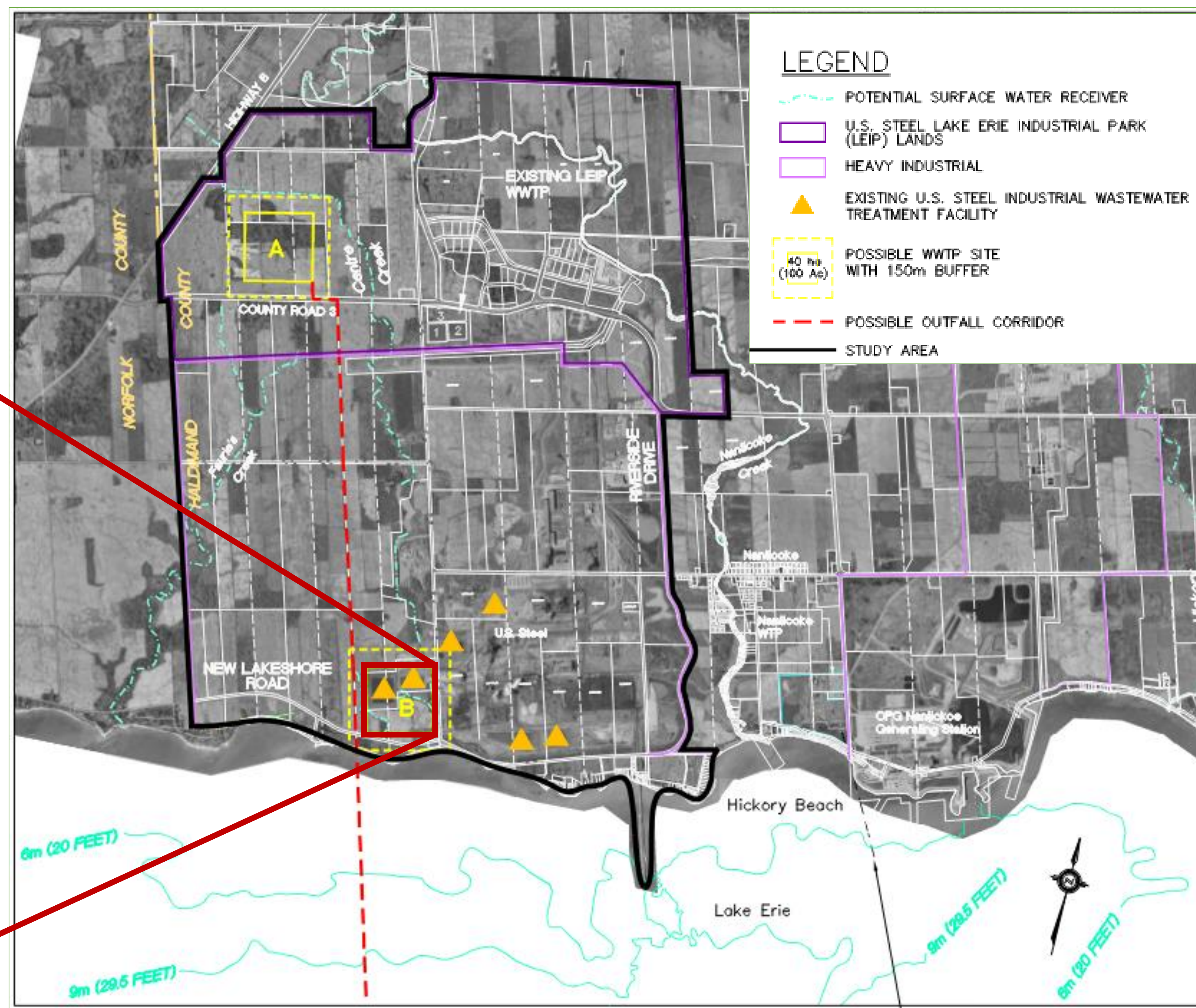


### Preferred Alternative Identified in the 2011 ESR

#### Description

The 2011 Class EA recommended future servicing of the LEIP and surrounding communities with a new 75 megalitres per day (MLD) wastewater treatment plant discharging through an outfall pipe to Lake Erie.

Site 'B' was selected as the preferred location of the proposed wastewater treatment plant.





## New or Updated Technical Studies

### Archaeological

The ESR Addendum will document the findings of:

1. The Stage 1 and Stage 2 Archaeological Assessments completed in 2008/2009.
2. A new Stage 1 Archaeological Assessment to capture the areas not covered in the 2008/2009 assessments.

### Cultural Heritage

A Cultural Heritage study was not completed for the 2011 ESR as it was not required under 2011 standards.

A Cultural Heritage Report: Existing Conditions and Preliminary Impact Assessment will be completed and included in the ESR Addendum.

### Phase 1 Environmental Site Assessment

A Phase 1 Environmental Site Assessment was not completed for the 2011 ESR as it was not required under 2011 standards.

A new Phase 1 Environmental Site Assessment will be completed for the preferred site and included in the ESR Addendum.

### Ecology

Due to legislative and regulatory changes, as well as the potential for existing conditions to change over time, the previously completed ecological studies in 2006 need to be updated as part of the ESR Addendum.

A new ecological study will be completed and included in the ESR Addendum.



## Highway 6 Corridor Water and Wastewater Servicing Strategy

### Description

In 2015 the Highway 6 Corridor Water and Wastewater Servicing Strategy developed alternatives to upgrade water and wastewater infrastructure within each community along the Highway 6 corridor.

Alternatives included capacity and treatment technology upgrades to the existing infrastructure, as well as the installation of new infrastructure.

The wastewater servicing strategy includes the communities of:

1. Caledonia
2. Hagersville
3. Jarvis
4. Townsend
5. Cayuga – subsequently screened out due to recent upgrades to the Cayuga WWTP and distance from closest connection to Highway 6 Corridor

### How does the Highway 6 Corridor Water and Wastewater Servicing Strategy relate to the ESR Addendum?

The 2011 Class EA recommended future servicing of the LEIP and surrounding settlements with a new WWTP.

The Highway 6 Corridor Water and Wastewater Servicing Strategy reviews the conveyance infrastructure needed to re-route wastewater flows from the communities along the Highway 6 Corridor to the new WWTP which was proposed in the 2011 Class EA.

The proposed long-term strategy involves a new centralized WWTP, allowing for decommissioning of the existing WWTP's and treatment lagoons in communities along the Highway 6 Corridor.





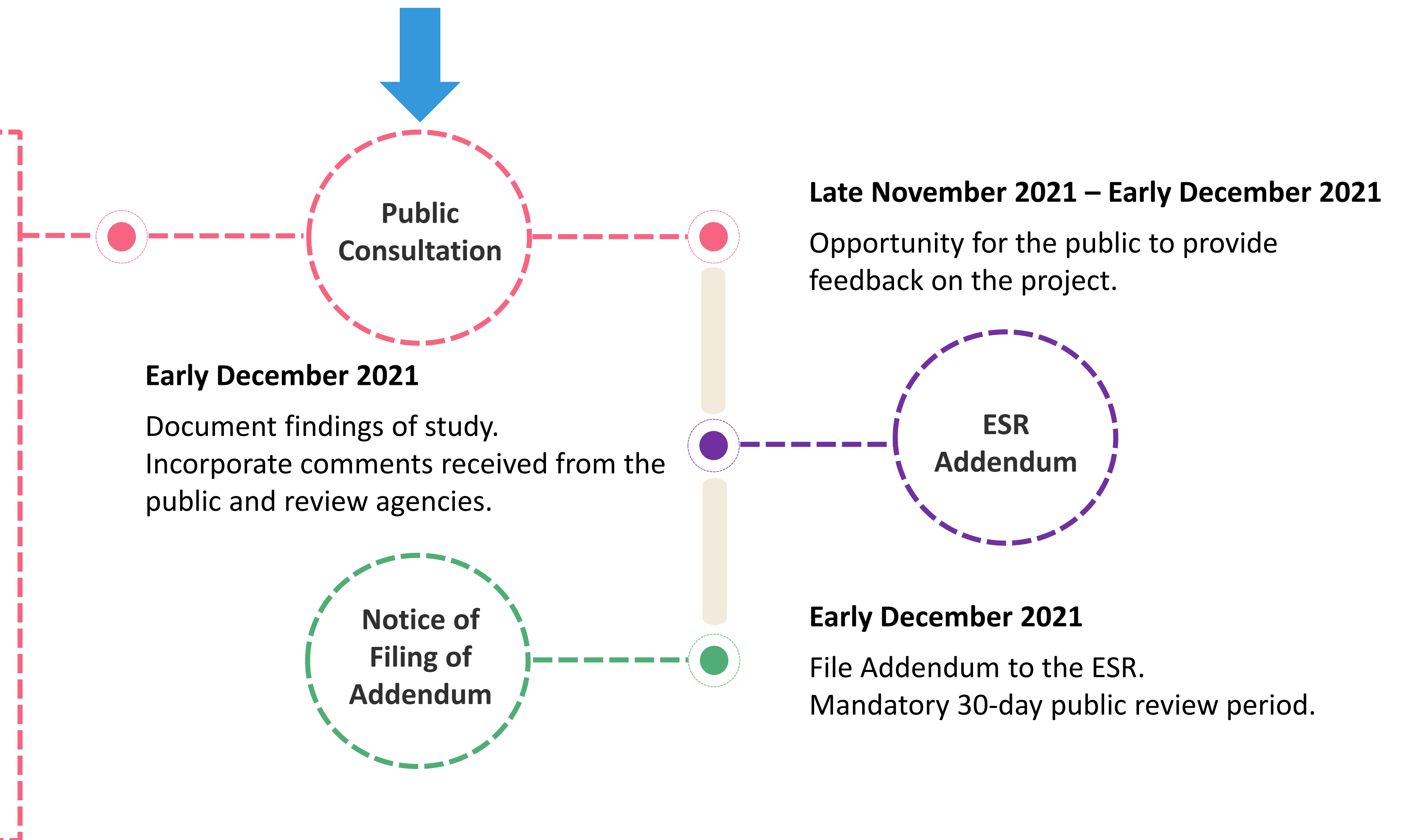
## Next Steps

### Stay Informed

If you have comments or questions for the Study Team, or if you would like to be added to the study contact list to be notified of the filing of the ESR Addendum, please contact:

Philip Wilson  
 Manager, Water & Wastewater Engineering  
 Haldimand County  
 Phone: 905-318-5932 ext. 6431  
 Email: [pwilson@haldimandcounty.on.ca](mailto:pwilson@haldimandcounty.on.ca)

We are currently in the Public Consultation stage.



If you have any accessibility requirements in order to participate in this project, please contact Philip Wilson.

Information will be collected in accordance with the Municipal Freedom of Information and Protection of Privacy Act (MFIPPA). With the exception of personal information, all comments will be part of the public record.