



IN CASE OF EMERGENCY



Power Outage

Prepare NOW

To be Ready

Most power outages will be over almost as soon as they begin, but some can last much longer - up to days or even weeks. Power outages are often caused by freezing rain, sleet storms and/or high winds which damage power lines and equipment. Cold snaps or heat waves can also overload the electric power system.

During a power outage, you may be left without heating/air conditioning, lighting, hot water, or even running water. If you only have a cordless phone, you will also be left without phone service. If you do not have a battery-powered or crank radio, you may have no way of monitoring news broadcasts. In other words, you could be facing major challenges.

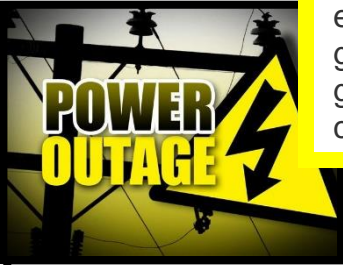
POWER OUTAGE

During a power outage:

- Retrieve your Flashlight
- Turn off all tools, appliances and electronic equipment, and turn the thermostat(s) for the home heating system down to minimum to prevent damage from a power surge when power is restored. Also, power can be restored more easily when there is not a heavy load on the electrical system.
- Turn off all lights, except one inside and one outside, so that both you and hydro crews outside know that power has been restored.
- Don't open your freezer or fridge unless it is absolutely necessary. A full freezer will keep food frozen for 24 to 36 hours if the door remains closed.
- Listen to your battery-powered or wind-up radio for information on the outage and advice from authorities.

Use proper candle holders. Never leave lit candles unattended and keep out of reach of children. Always extinguish candles before going to bed.

Never use charcoal or gas barbecues, camping heating equipment, or home generators indoors or in garages. They give off carbon monoxide



Remember to always stay clear of downed lines or equipment by at least *10 meters*. Never assume that they are safe to approach.

- Make sure your home has a working carbon monoxide detector. If it is hard-wired to the house's electrical supply, ensure it has a battery-powered back-up.
- Protect sensitive electrical appliances such as TVs, computer, and DVD players with a surge-protecting powerbar.