



How to Read your Water Meter

Category: Registers

Type: Interpreter II

Issue: Reading your meter

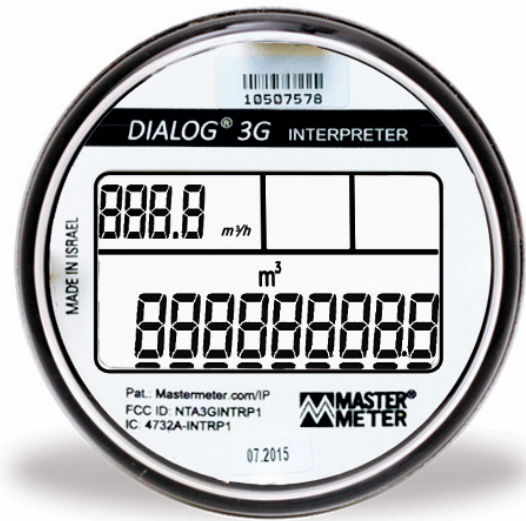
Reading Your Meter

Your LCD register includes a digital consumption window that provides your total water usage.

When viewing the digital consumption window, the total water usage reads from left to right.

As shown in Image 1:

- The digit to the right of the decimal point displays every 100 Liters
- The first digit on the left of the decimal point will be 1 Cubic Meter (1m³), which is 1,000 Liters of water.



Detecting a Leak

There are Positive and Negative arrows located in the top, middle pane of the LCD display. These arrows represent water flow in the meter.

If the Positive arrow stays active for longer than 24 continuous hours a Leak Alarm will become active. Leaks or Leak Alarms are indicated by a water droplet symbol in the top, right window pane of the LCD display.

If all faucets, showerheads, and other uses of water have been shut off and water flow is still detected, this potentially means there is a leak somewhere within your plumbing.

