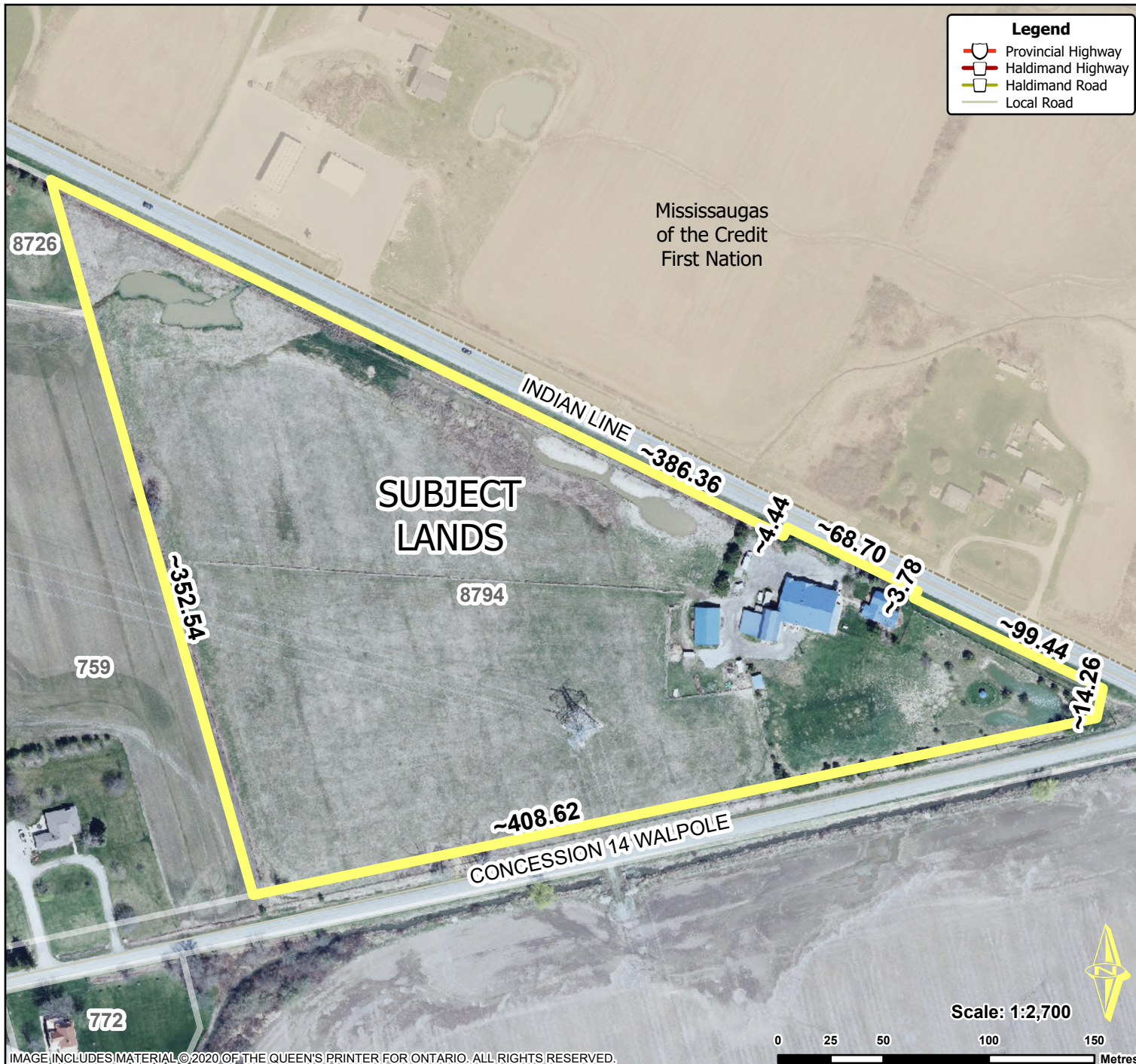


Location Map FILE #PLA-2025-165 APPLICANT: Tayyabin Cooperative Ltd



Location:

**8794 INDIAN LINE
GEOGRAPHIC TOWNSHIP OF WALPOLE
WARD 1**

Legal Description:

**WAL CON 15 PT LOTS 10 11 SUBJECT
TO HYDRO EASEMENT**

Property Assessment Number:

2810 332 006 12400 0000

Size:

7.58 Hectares (18.72 Acres)

Zoning:

**A (Agriculture), GRCA (Regulated Lands)
& HCOP (Riverine Hazard Lands)**

HALDIMAND COUNTY, ITS EMPLOYEES, OFFICERS AND AGENTS ARE NOT RESPONSIBLE FOR ANY ERRORS, OMISSIONS OR INACCURACIES WHETHER DUE TO THEIR OWN NEGLIGENCE OR OTHERWISE. DO NOT USE FOR OPERATING MAP OR DESIGN PURPOSES. ALL INFORMATION TO BE VERIFIED.

