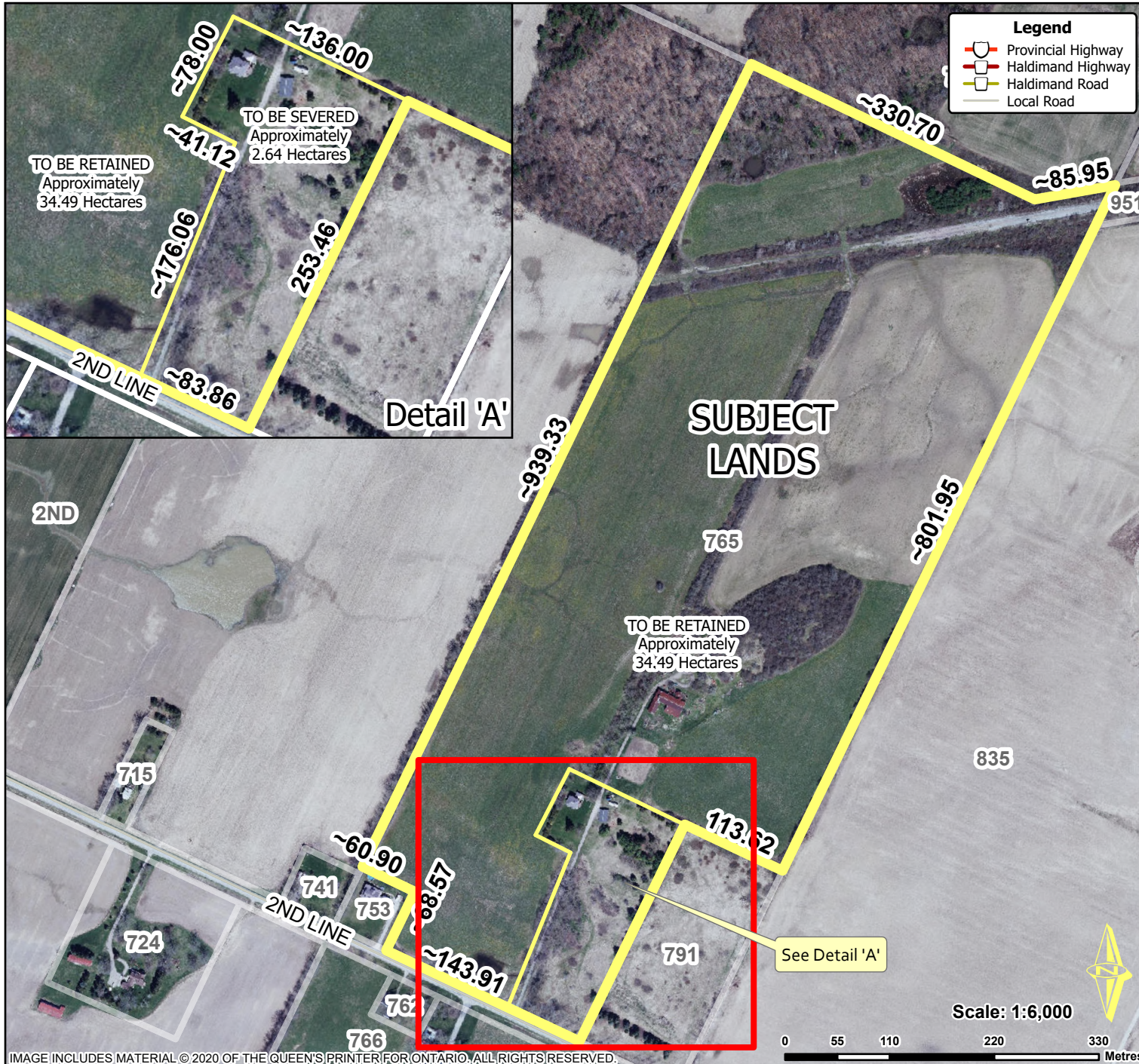


Location Map FILE #PLB-2025-026 APPLICANT: DeBoer



Location:
765 2ND LINE
GEOGRAPHIC TOWNSHIP OF ONEIDA
WARD 4

Legal Description:
OND CON 3 PT LOT 21 AND RP
18R6044 PART 3

Property Assessment Number:
2810 153 001 07800 0000

Size:
37.13 Hectares (91.75 Acres)

Zoning:
A (Agriculture), W (Wetland)
& GRCA (Regulated Lands)

HALDIMAND COUNTY, ITS EMPLOYEES, OFFICERS AND AGENTS ARE NOT RESPONSIBLE FOR ANY ERRORS, OMISSIONS OR INACCURACIES WHETHER DUE TO THEIR OWN NEGLIGENCE OR OTHERWISE. DO NOT USE FOR OPERATING MAP OR DESIGN PURPOSES. ALL INFORMATION TO BE VERIFIED.

